

# Installation Procedures for Retain Pro 9.0

---

(Procedures are similar if re-installing previous version 2007)

The following topics are covered:

1. Installing Retain Pro 9 Single User License on a new computer
2. Installing Retain Pro 9 Network License on your server
3. Installing a Network License on your server when upgrading from a Single User License.
4. Using Auto Update on version 9.0
5. Removing Retain Pro from a computer

## 1. Installing Single User License on individual computers

Use this procedure to install on up to 4 or 12 (depending upon order option chosen) office/home/laptop computers (but NOT on a server – see next instruction).

Download the software from [www.retainpro.com/downloads](http://www.retainpro.com/downloads). Select the top **.EXE** link (unless you are downloading an earlier version) from the screen The following screen will be displayed:



### Download Versions

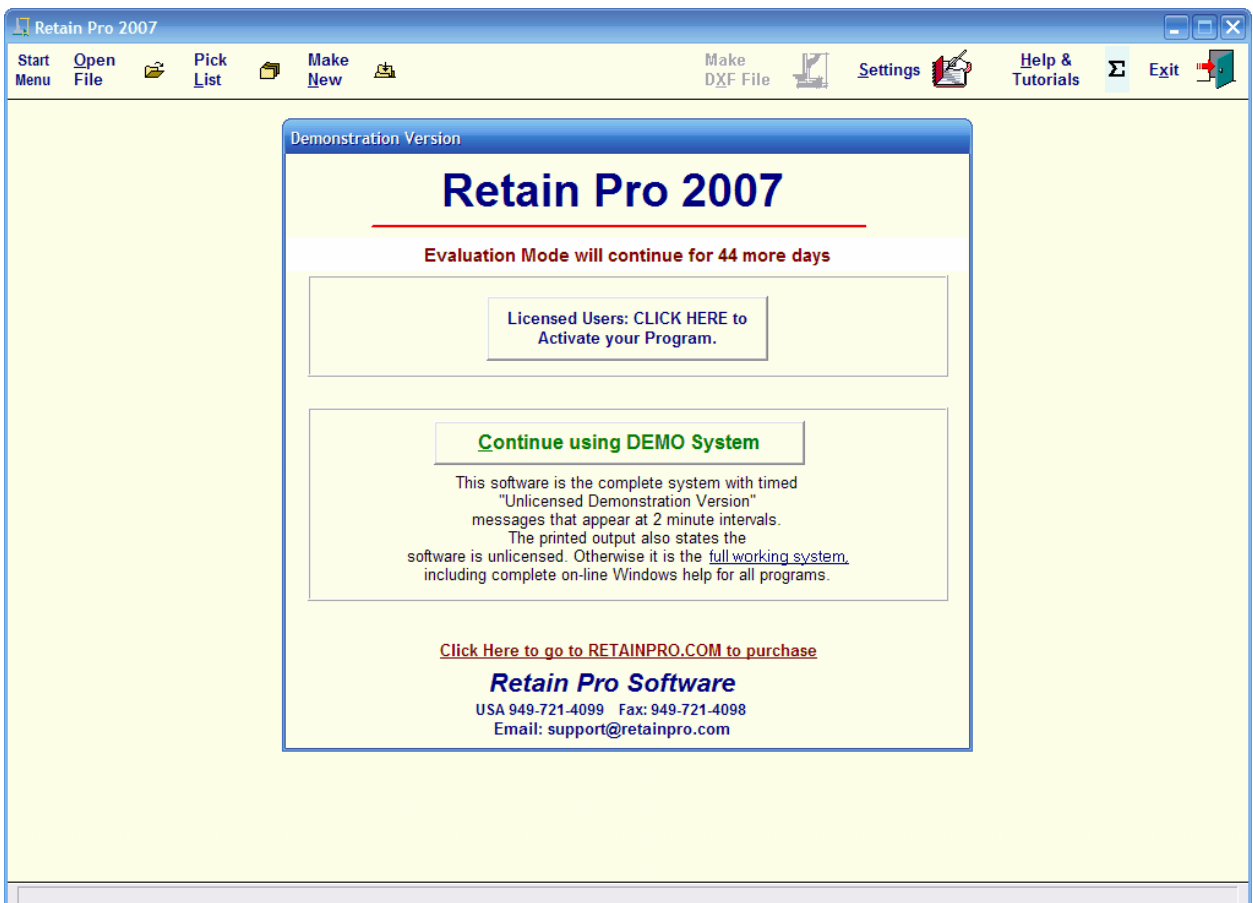
- Download Retain Pro 9.0 in .EXE format
- Download Retain Pro 2007 in .EXE format
- Download Retain Pro 2005 in .EXE format

The following screen will be displayed:



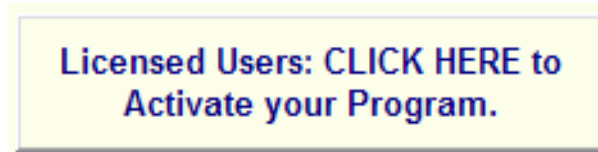
Create a folder to store Retin Pro 9 files (suggest "RP9"), then click SAVE

The Demonstration Version of Retain Pro 9 will be installed and a button will appear Licensed Users  
Click Here:

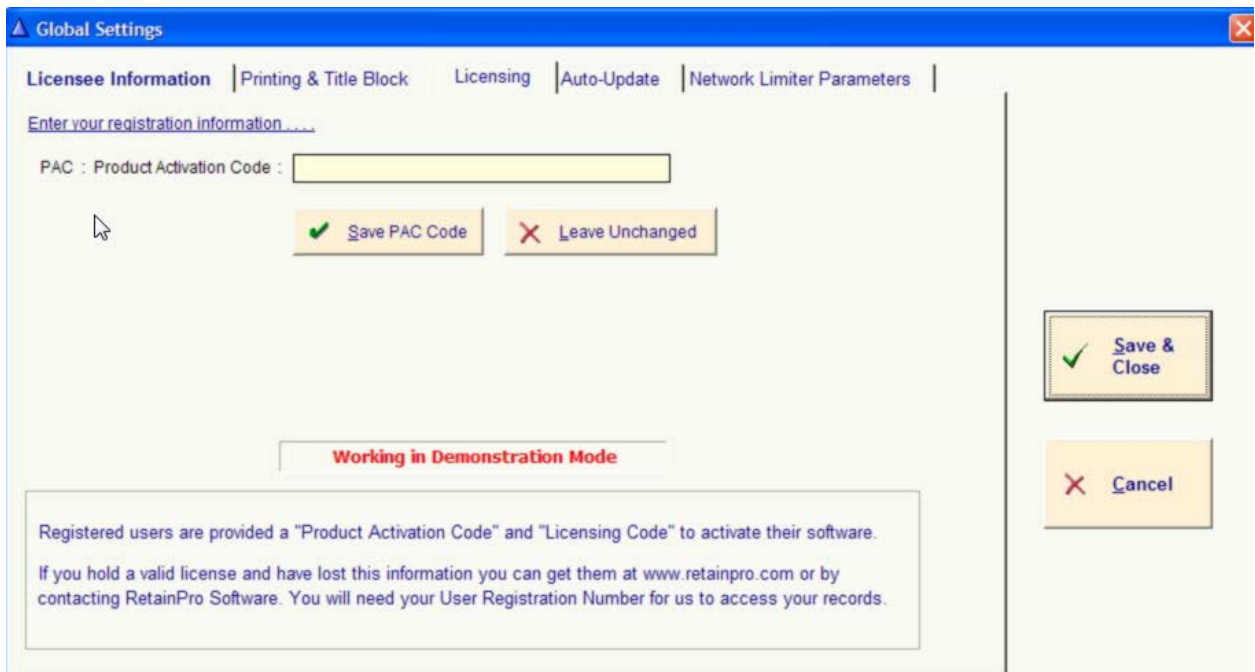


The demonstration version of Retain Pro 9 can be used for a total of 45 days in "Evaluation Mode" where you can use the entire program with no limitations (except the words "demo" on the report printouts). When this period has ended the program will no longer operate and you cannot extend the period by reinstalling or changing the computer date.

After clicking this button:



The following screen will be displayed:



Enter your 16-digit PAC code – include the hyphens – and click Save PAC Code. If your PAC was entered correctly the program will change to a registered version. The following opening screen will appear:



Click SAVE & CLOSE and you will be ready to go with the following screen:

# Welcome to Retain Pro 9

What would you like to do ?



## Last Activities.....



Open Last File : c:\users\hugh\documents\retainpro9\examples.rp5



Open Last Wall : Cantilevered Wall, EX-1

## Select a recent Retain Pro file....

c:\users\hugh\documents\retainpro9\walls group a.rp5  
c:\users\hugh\documents\retainpro9\garage.rp5  
c:\users\hugh\documents\retainpro9\clifton glass.rp5  
c:\users\hugh\documents\retainpro9\north wall.exposed roc



View/Edit Selected File



Create Project File



Open Project File



Delete Project File



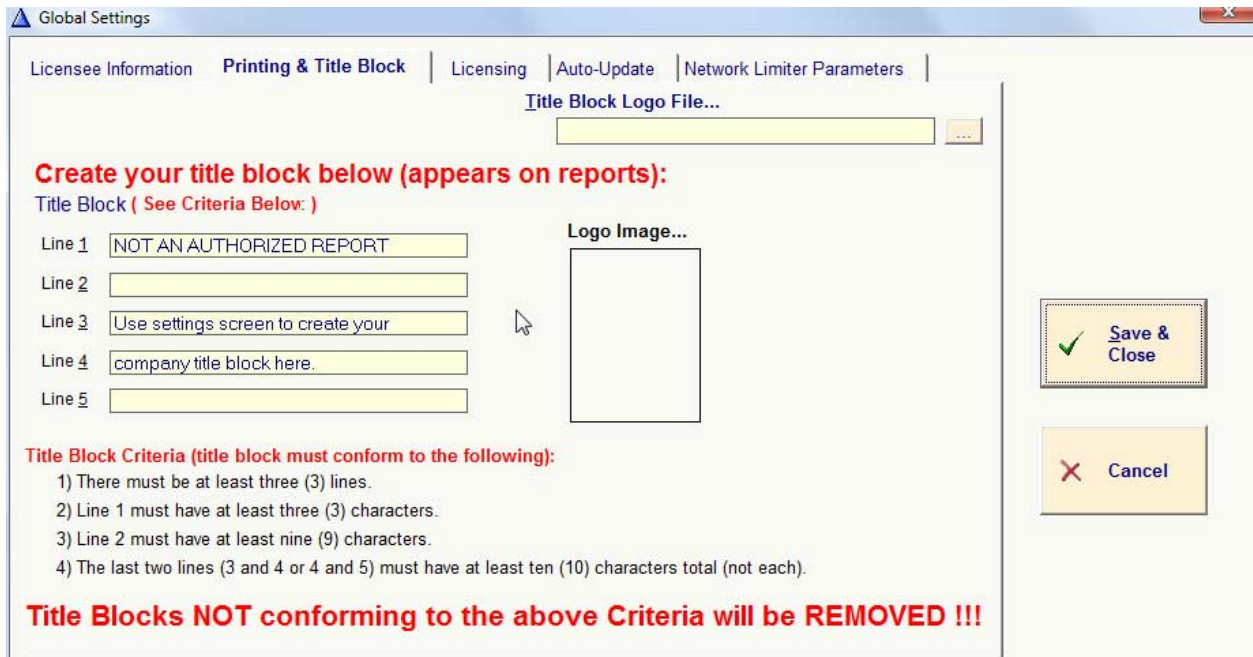
Help



Cancel

Before doing your first design be sure to create your title block. Otherwise the report printouts will show an UNLICENSED COPY. Clicks on the Settings tab on the tool bar and you will get this screen:

XX-XXXXXX



## 2. Installing Retain Pro 9 Network Version on your server

**Note: Do not attempt to install a Single User License on a server!**

- Install Retain Pro on your server using the instructions above. It will be in demonstration mode.
- Read the CAUTION below for anti-virus and firewall instructions.
- Start Retain Pro on the server with Administrator Rights. Enter your Product Activation Code (PAC) per the instructions in section #1 above. This will activate Retain Pro from demonstration mode and store your PAC on the server.
- On each computer that will launch Retain Pro 9 from the server make sure that the server is mapped as a drive letter....NOT a share name.
- Make sure that you allow the client computers to have Read/Write/Modify permissions to the Retain Pro installation folder on the server. This is essential because a few files that manage licensing and network limitations must be access by the software running on the remote "client" computer.
- On the client, create a shortcut to the executable program file on the server. Be sure that on your shortcut the startup directory is set to the installation directory on the server.
- If a workstation remains in demo mode, look for an RP9.ini file in affected workstation and delete it.

### **3. Installing a Network Version on a server when upgrading from a Single User License**

1. On each computer where Retain Pro has already been installed it is best to uninstall it, BUT keep any data files you have created for future use.
2. Look for an RP9.ini file in an activated computer and delete it.
3. Repeat this on all computers where Retain Pro has been installed.
4. Install the software on your server (or a computer where all other computers will be able to launch it from). Follow the same instructions as #2 above. If you have already installed you can proceed to create the shortcuts on the remote computers as described in the normal "Network" installation instructions shown in #2 above.

### **4. Using AutoUpdate**

Occasionally we issue updates to correct problems reported and to add enhancements. To assure you are always current you will see a pop-up message asking if you want to check for updates. If you click YES it will check to see if you are using the latest release. If a later one is available it will let you know and ask permission to proceed with the update installation.

If this feature does not work – perhaps because you are using a much earlier release – you will need to download the latest release from [www.retainpro.com/downloads](http://www.retainpro.com/downloads).

### **5. Removing Retain Pro 9 from a computer**

You may want to remove Retain Pro 9 from a computer, such as to free it for another computer installation to keep within your license restrictions. To do this go to your Programs directory and select the folder (RP9?), then select Uninstall Retain Pro 9. It will be permanently removed.

**NOTE: If you have difficulty with any of the above, and you are sure you have followed the above procedures, you can email us at [support@retainpro.com](mailto:support@retainpro.com). Describe as specifically as you can any messages you got and where in the process you had a problem. And give us your registration number (RP-xxxxxxx)**